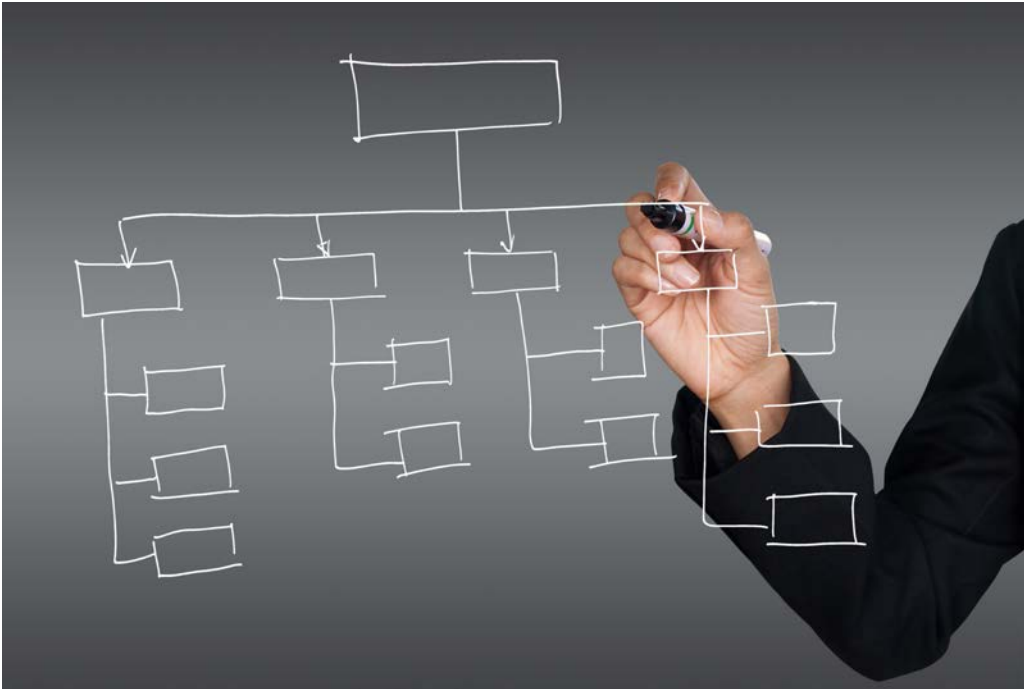


The Solvency II Capital Requirement for Insurance Groups - On the Tension Between Regulatory Law and Company Law



Britta Behrendt Jonsson

FACULTY OF ARTS AND SCIENCES

Linköping Studies in Arts and Sciences No. 747, 2018
Department of Management and Engineering (IEI)
Business Law Division

Linköping University
SE-581 83 Linköping, Sweden

www.liu.se