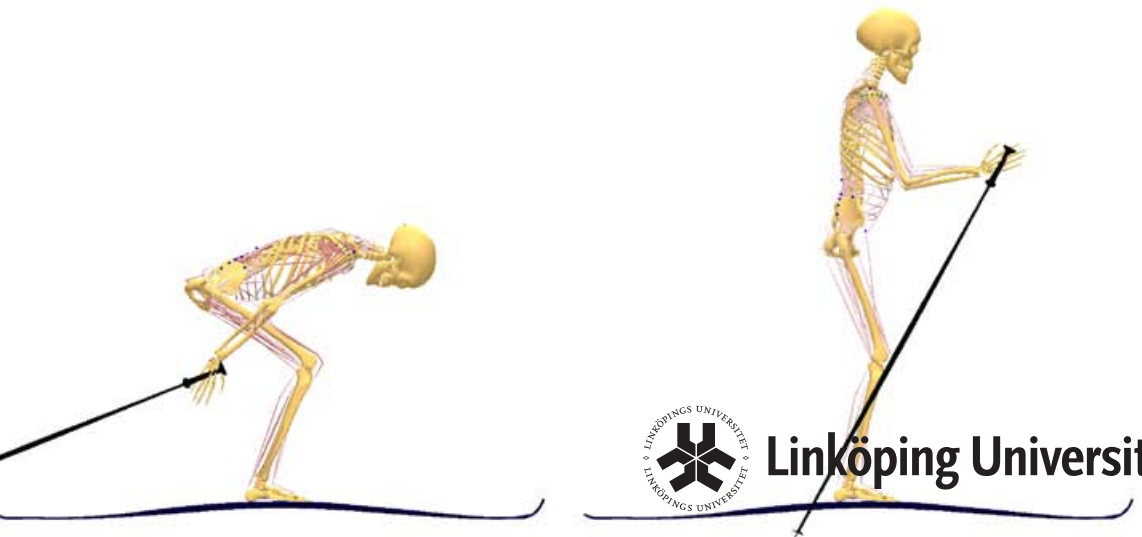
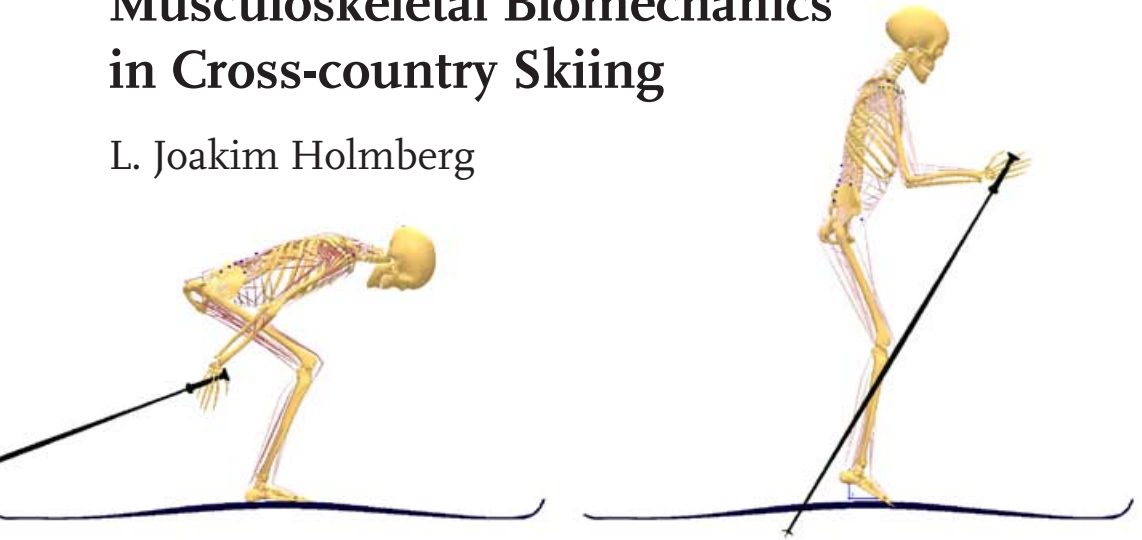
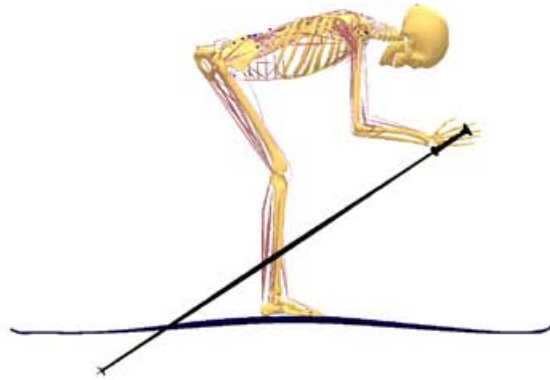


Musculoskeletal Biomechanics in Cross-country Skiing

L. Joakim Holmberg





Linköping University

Linköping Studies in Science and Technology.
Dissertations. No. 1437
Division of Mechanics
Department of Management and Engineering
The Institute of Technology
Linköping University, SE-581 83, Linköping, Sweden
Linköping, May 2012
www.liu.se

