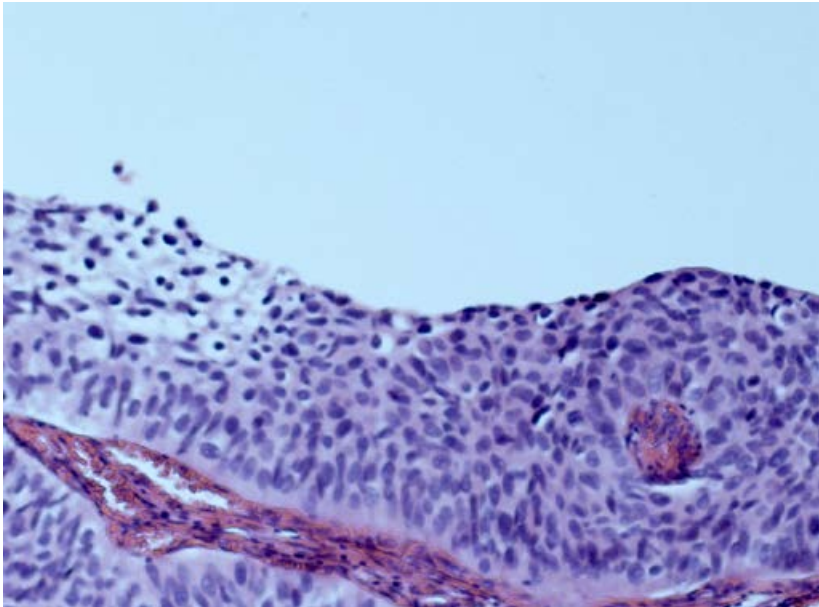


Linköping Medical Dissertations No. 1344

# Aspects of Recurrence and Progression in Ta/T1 Urinary Bladder Cancer

Georg Jancke



Linköping University



## **Linköping University**

Linköping University Medical Dissertation No. 1344, 2013

Division of Urology

Department of Clinical and Experimental Medicine,

Faculty of Health Science, Linköping Sweden

Linköping, Sweden

[www.liu.se](http://www.liu.se)